

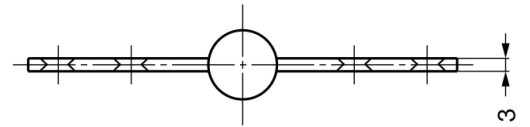
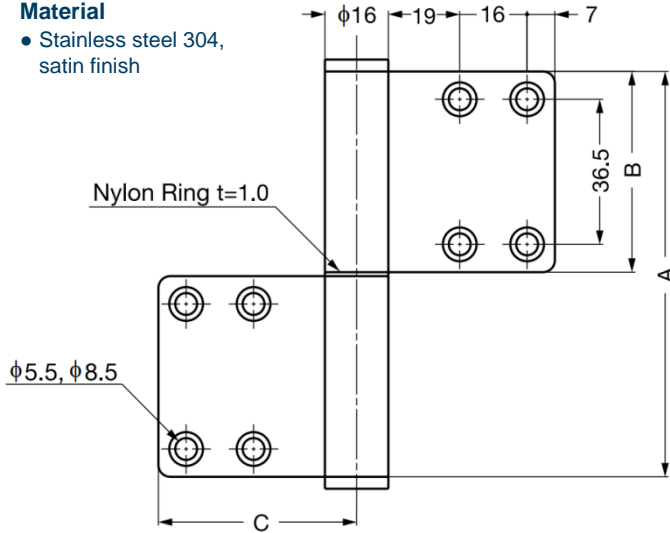
## GS-6173-2 Stainless Steel Lift-Off Hinge

### Features

- Countersunk screw holes from both sides
- Non-handed: can be installed on left or right side

### Material

- Stainless steel 304, satin finish



Part No.	A	B	C	Load Capacity (per pair)	
GS-6173-2	102	50.5	50	392 N	40 kg

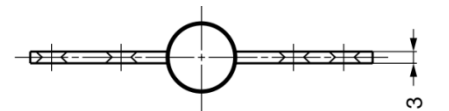
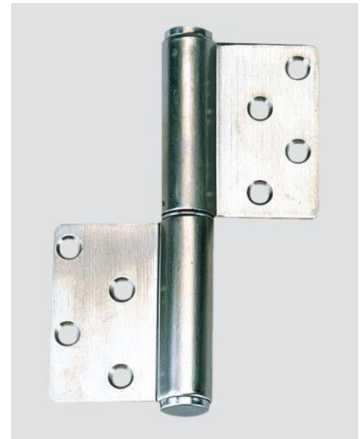
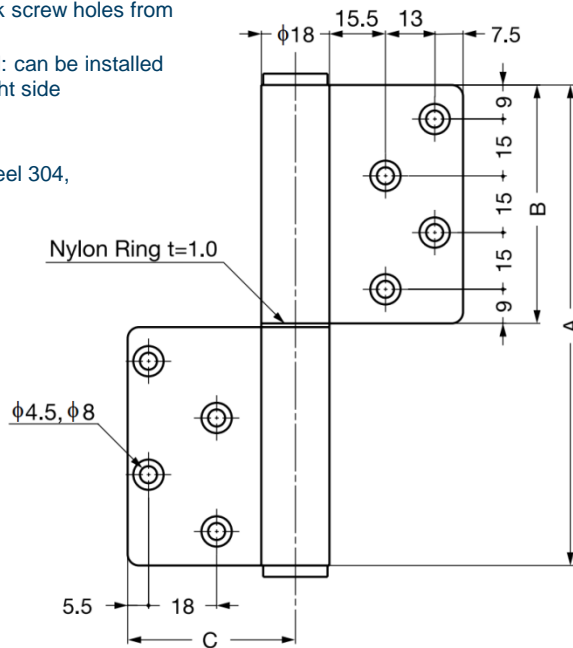
## GS-6173-5 Stainless Steel Lift-Off Hinge

### Features

- Countersunk screw holes from both sides
- Non-handed: can be installed on left or right side

### Material

- Stainless steel 304, satin finish



Part No.	A	B	C	Load Capacity (per pair)	
GS-6173-5	127	63	45	490 N	50 kg